

# ARTIFICIAL INTELLIGENCE

## Storytelling Patterns and Character Development in Today's Movies

Jeanine Reutemann  
Researcher, Lecturer, Digital Media Expert  
[audiovisualresearch.org](http://audiovisualresearch.org)

## Historical Origins in Storytelling



## Historical Origins in Storytelling



Chalk on forehead:  
*anmauth* (truth)

## Historical Origins



Chalk on forehead:  
*anmauth* (truth)  
*mauth* (death)

# AI STORYTELLING

**Robots are initially magical:**

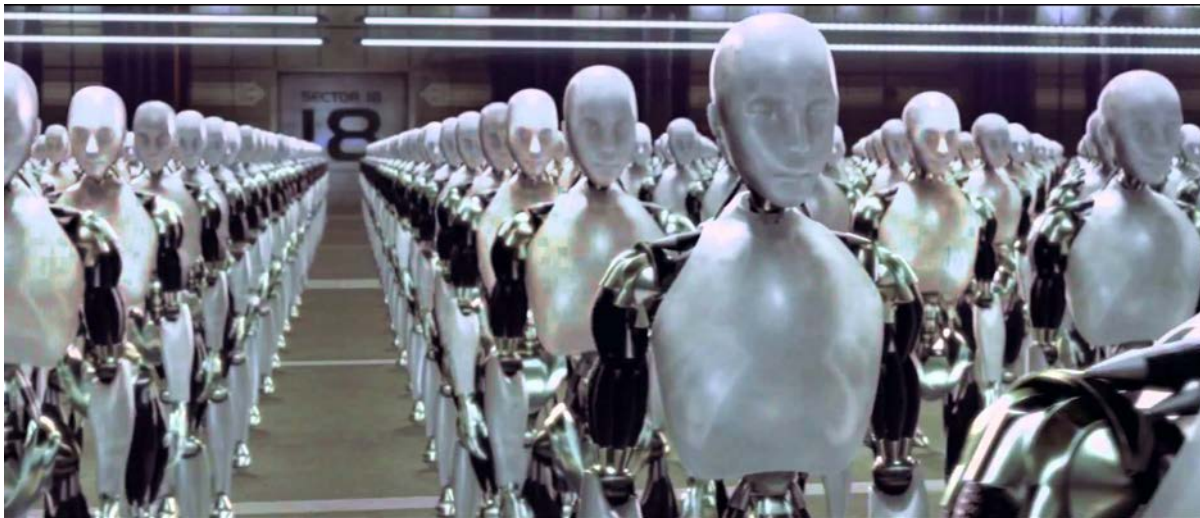


*Metropolis, 1927*



# AI STORYTELLING

**Robots are initially magical:  
> they relief us from redundant work**



*iRobot, 2004*

# AI STORYTELLING

**Robots are initially magical:**

- > they relief us from redundant work**
- > robots are slaves for our pleasure**

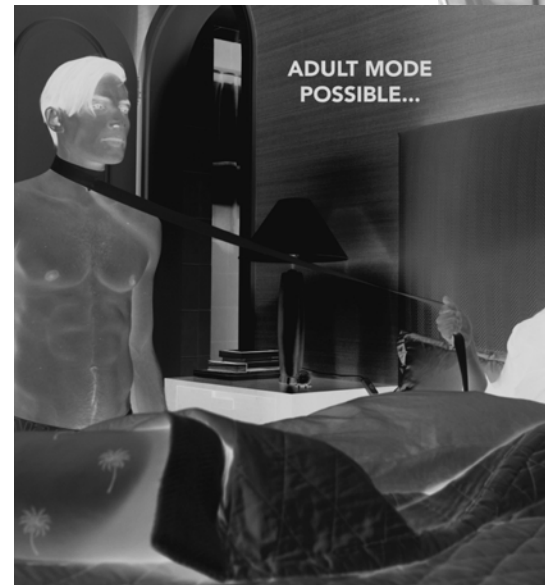


*Photos: Anique Wild &  
Yannik Zamboni*

# AI STORYTELLING

**Robots are initially magical:**

- > they relief us from redundant work**
- > robots are slaves for our pleasure**



*Photos: Anique Wild & Yannik Zamboni*

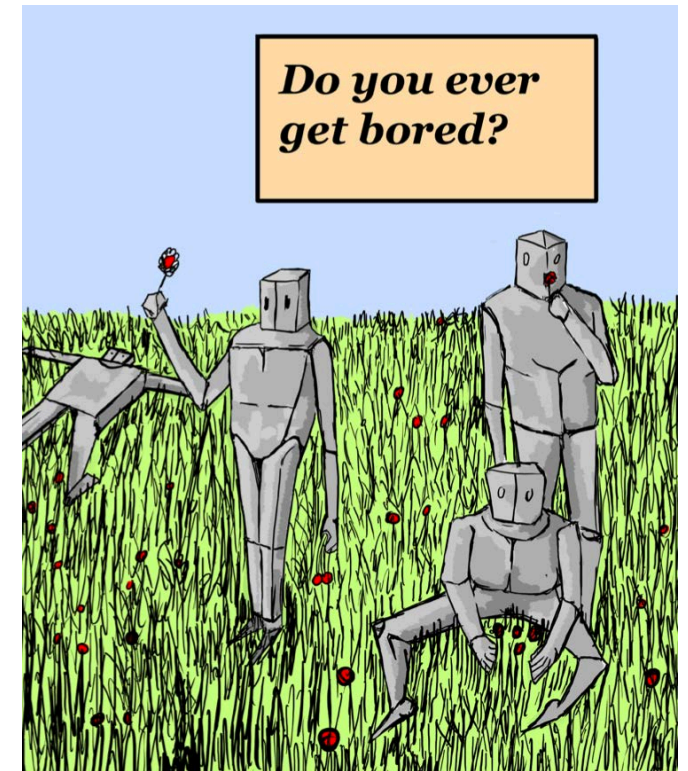
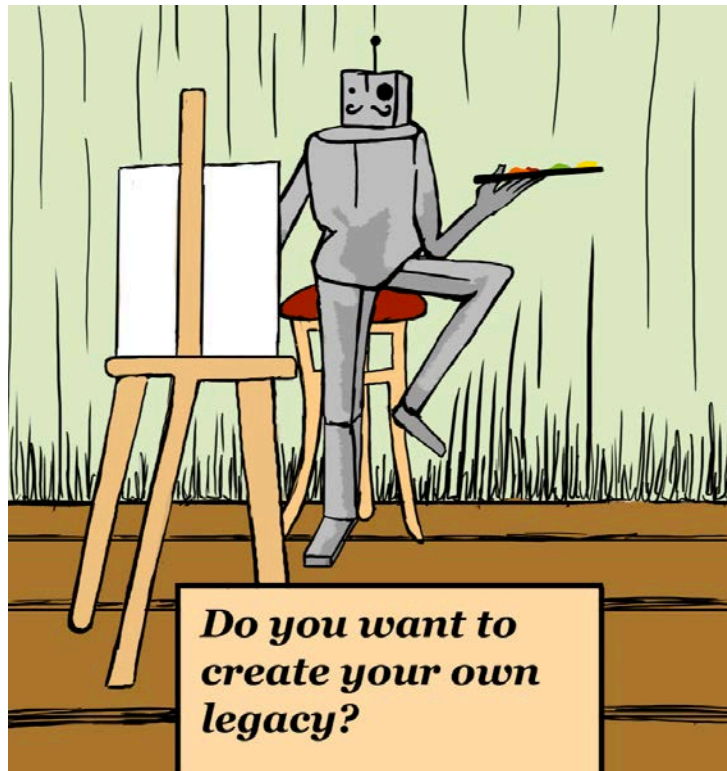


# AI STORYTELLING

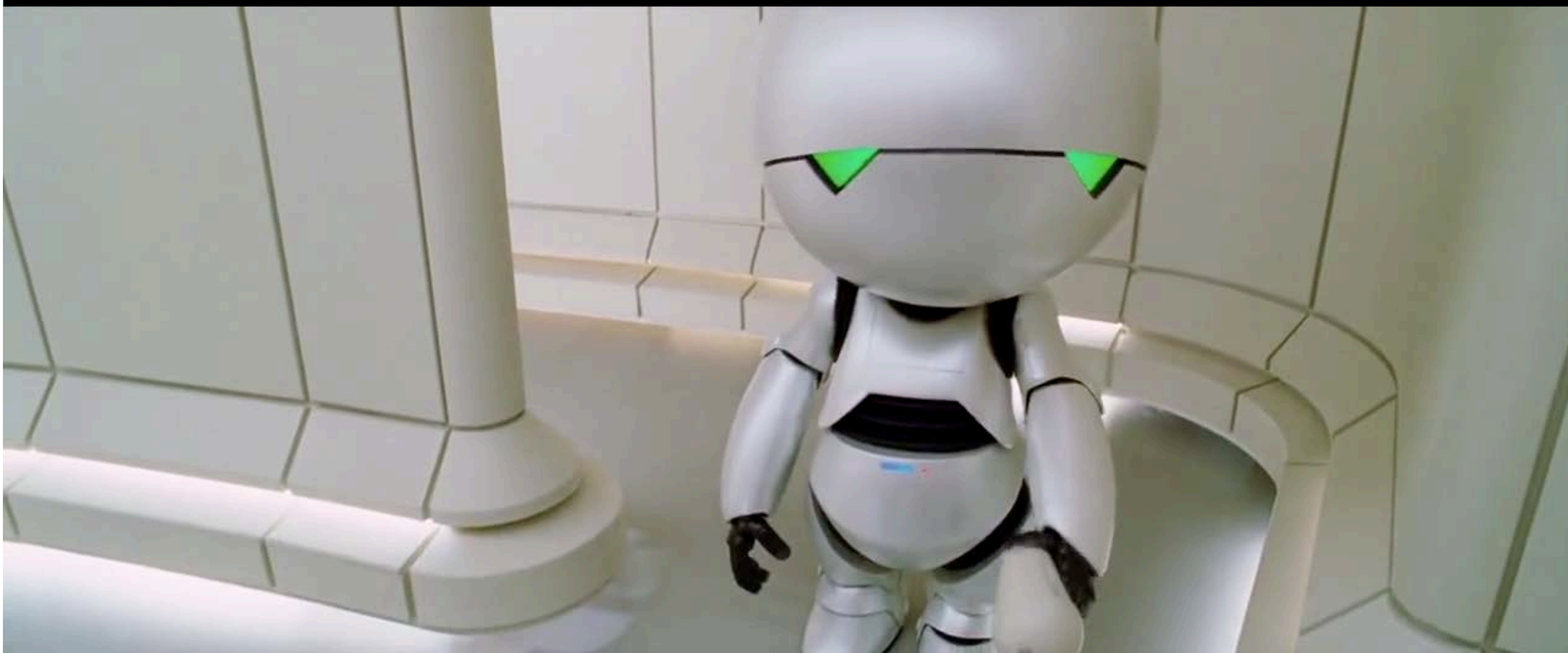
**Robots are initially magical:**

- > they relieve us from redundant work**
- > robots are slaves for our pleasure**

**AI robots develop ,self-conscious' state:**



*Illustrations: Jodok Wehrli*



# AI STORYTELLING

**Robots are initially magical:**

- > they relieve us from redundant work**
- > robots are slaves for our pleasure**

**AI robots develop ,self-conscious' state:**

- > turn evil**

# AI STORYTELLING

**Robots are initially magical:**

- > they relieve us from redundant work**
- > robots are slaves for our pleasure**

**AI robots develop ,self-conscious' state:**

- > turn evil**
- > inversing power relation with human**



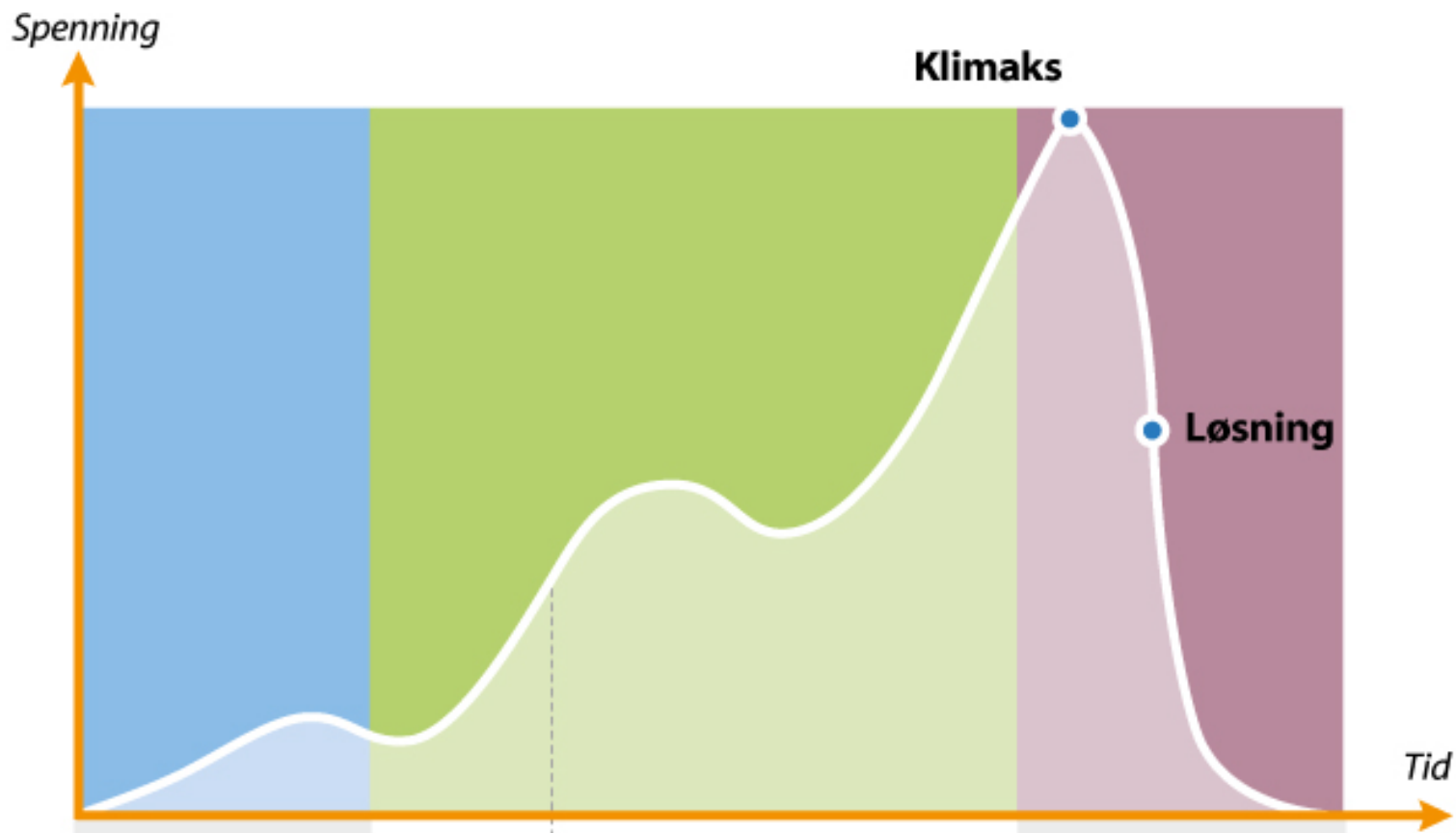
# AI STORYTELLING

**Robots are initially magical:**

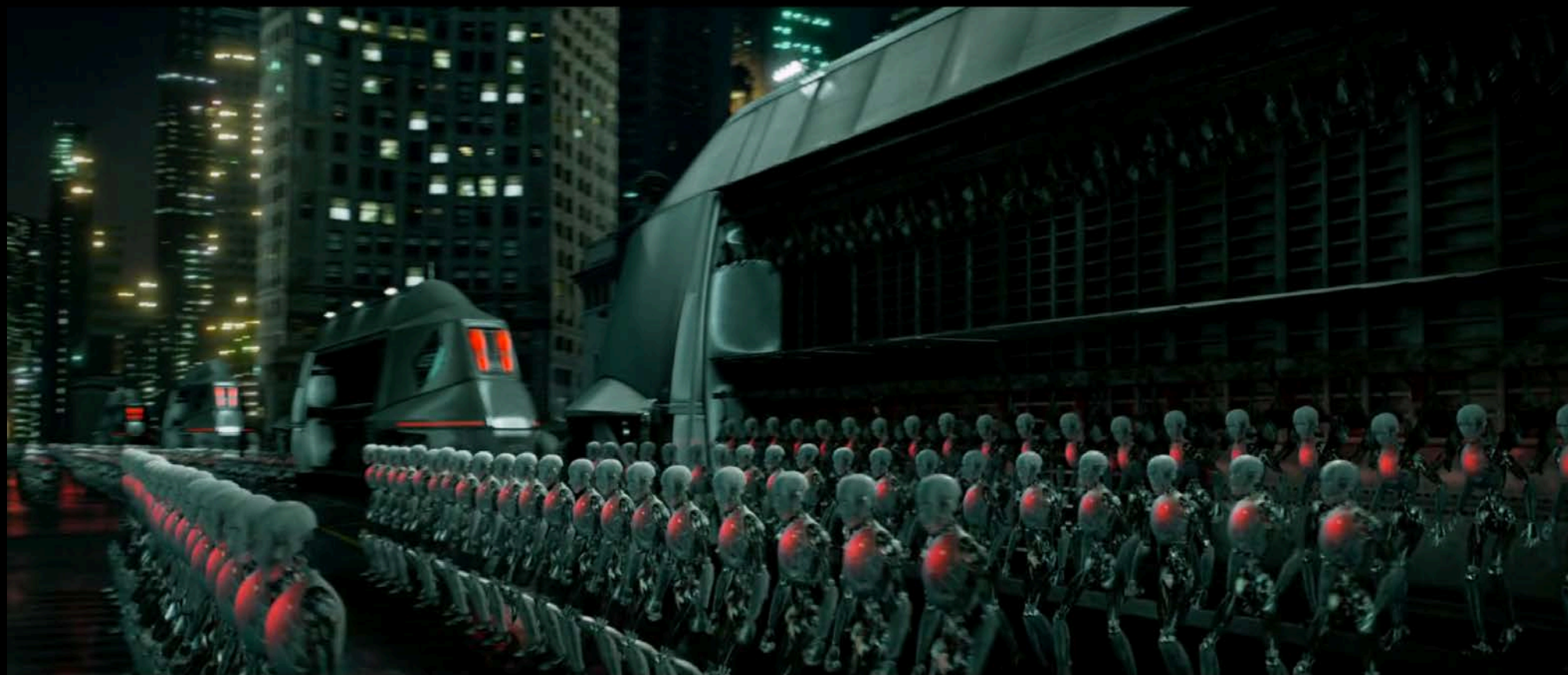
- > they relieve us from redundant work**
- > robots are slaves for our pleasure**

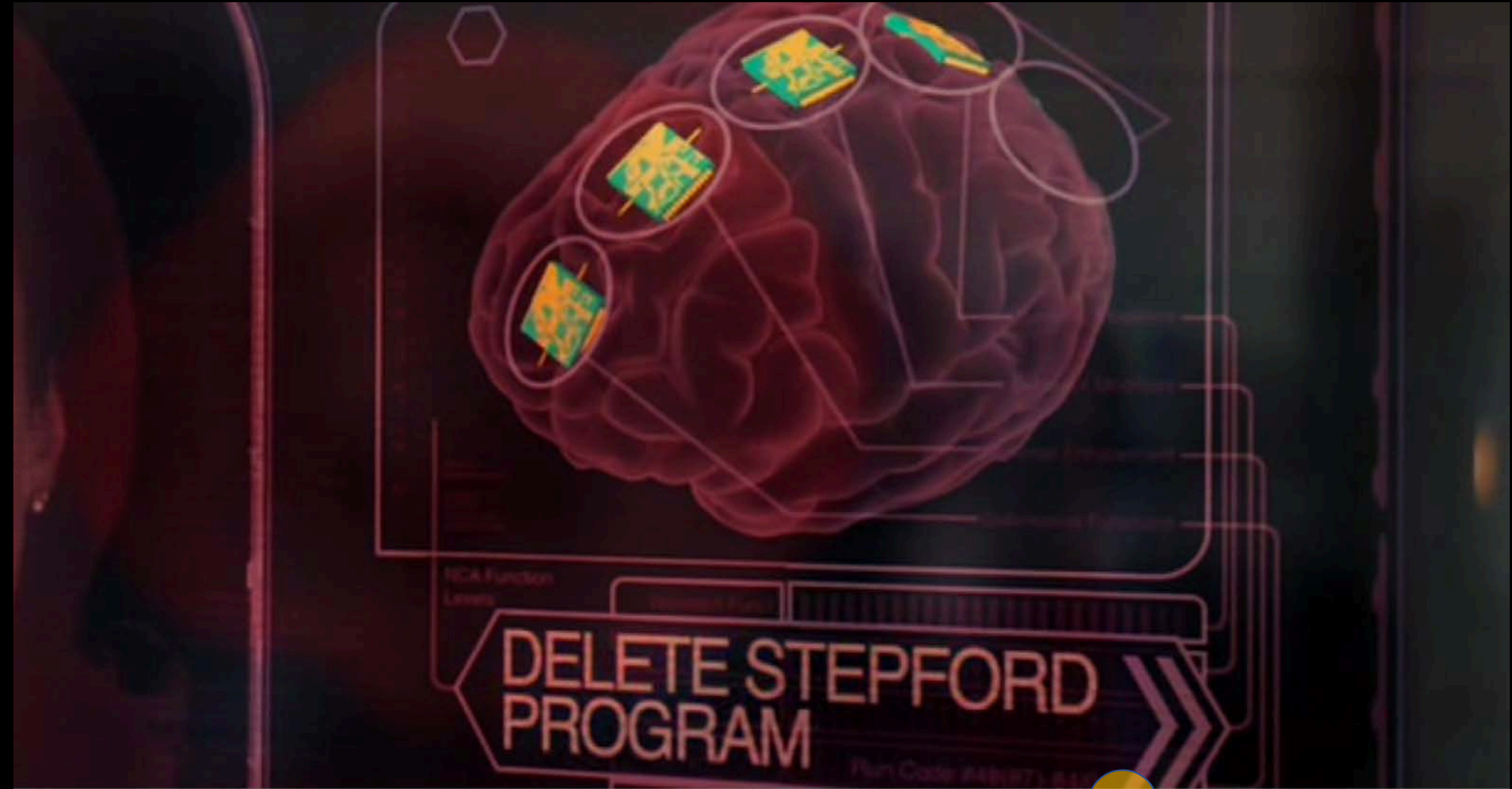
**AI robots develop ,self-conscious' state:**

- > turn evil**
- > inversing power relation with human**
- > existential threat to human race**

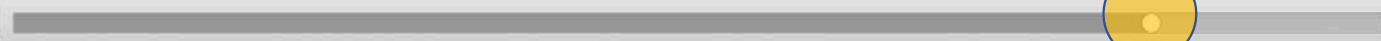


**Dramaturgy Model – Based on Aristoteles**





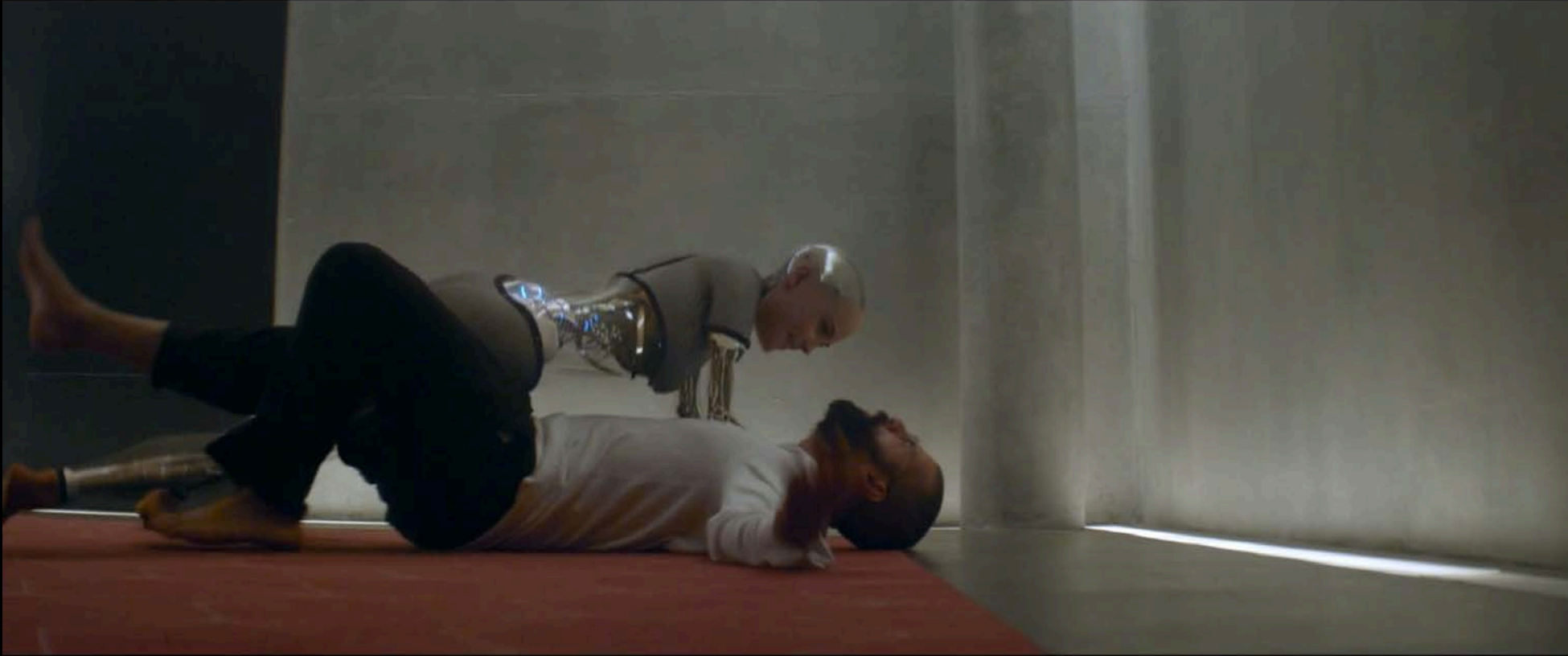
DELETE STEPFORD  
PROGRAM











# **TASK**

- 1. Introduction**
- 2. Relationship**
- 3. Suffering**
- 4. Turning against maker**

## **Character Ava:**

- **Voice**
- **Gestures / Posture**
- **Interaction with Caleb**

## **Image:**

- **Colours, Contrast, Light Setting**
- **Objects, Surrounding Space**
- **Perspectives & Angles**

## **Sound Design:**

- **Foley, Music**
- **Room Atmosphere**

## **Montage:**

- **Rhythm, Tempo**

web access / pw: Applaus!

<https://www.audiovisualresearch.org/exmachina/>





JADE v5.0 1





