

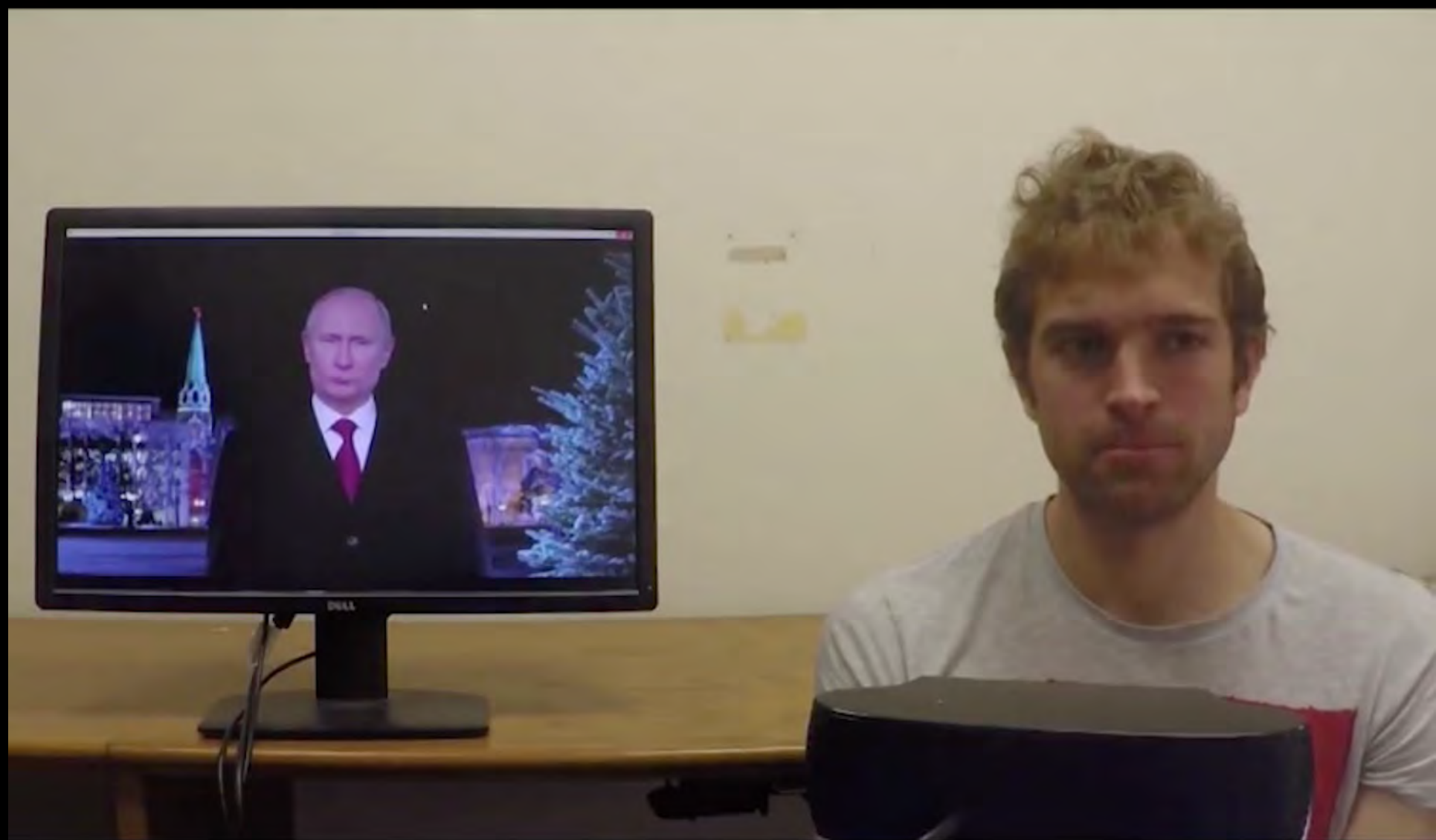


**I'm Barack Obama and I approve this message.**



~~I'm Barack Obama and I approve this message.~~

# Real-time Facial Reenactment



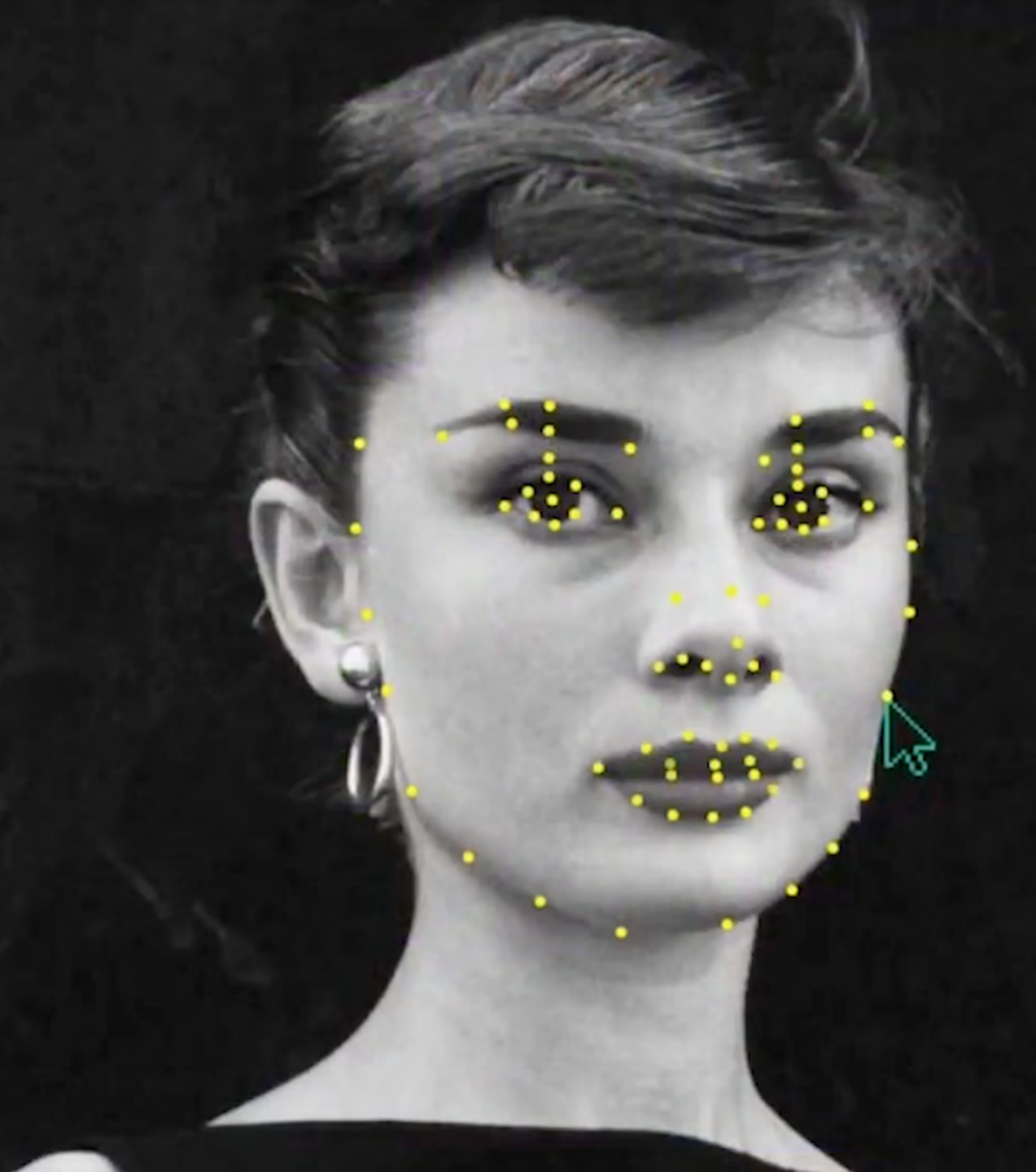
Live capture using a commodity webcam







**WHAT'S THE VALUE  
OF YOUR PICTURES?**







# **CAN WE STILL TRUST IMAGES IN THE FUTURE?**

***AND BY THE WAY:  
HOW SAFE IS OUR HISTORY FROM DEEPPKAKES?***

**Photography is truth.  
The cinema is truth  
twenty-four times per  
second**

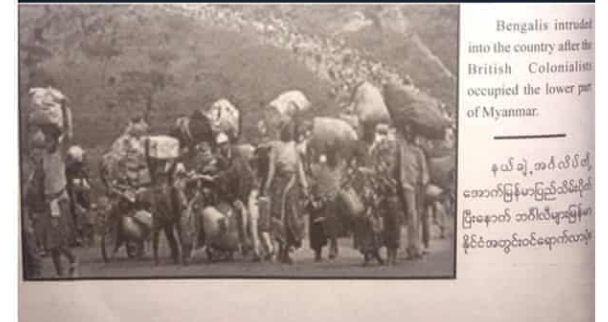
JEAN-LUC GODARD, 1960.







Rwandan Hutu refugees with as many possessions as they can carry trudge along a highway near Benaco Junction in Tanzania. They had tried to flee further away from Rwanda, into Tanzania, but had been turned back by Tanzanian soldiers. Several of the refugees said they would walk all the way through Kenya or Malawi just so they could return to Rwanda.





Cambridge  
Analytica

facebook





# **VERIFICATION STRATEGIES**



# ANATOMY OF A KILLING





**BBC News Africa** @BBCAfrica · 24. Sep.

So we took a closer look at the video...and found clues that prove the government was wrong.

We'll start with the location. Where did this happen?

The first 40 seconds of the video capture a mountain range with a distinctive profile

[Tweet übersetzen](#)



50 2,0 Tsd. 4,9 Tsd.



**BBC News Africa**

@BBCAfrica


Folgen

After a tip off from a Cameroonian source, we found an exact match for that ridge line on Google Earth

[Tweet übersetzen](#)



13:26 - 24. Sep. 2018



# **TRANSPARENCY AND TRUST**





